

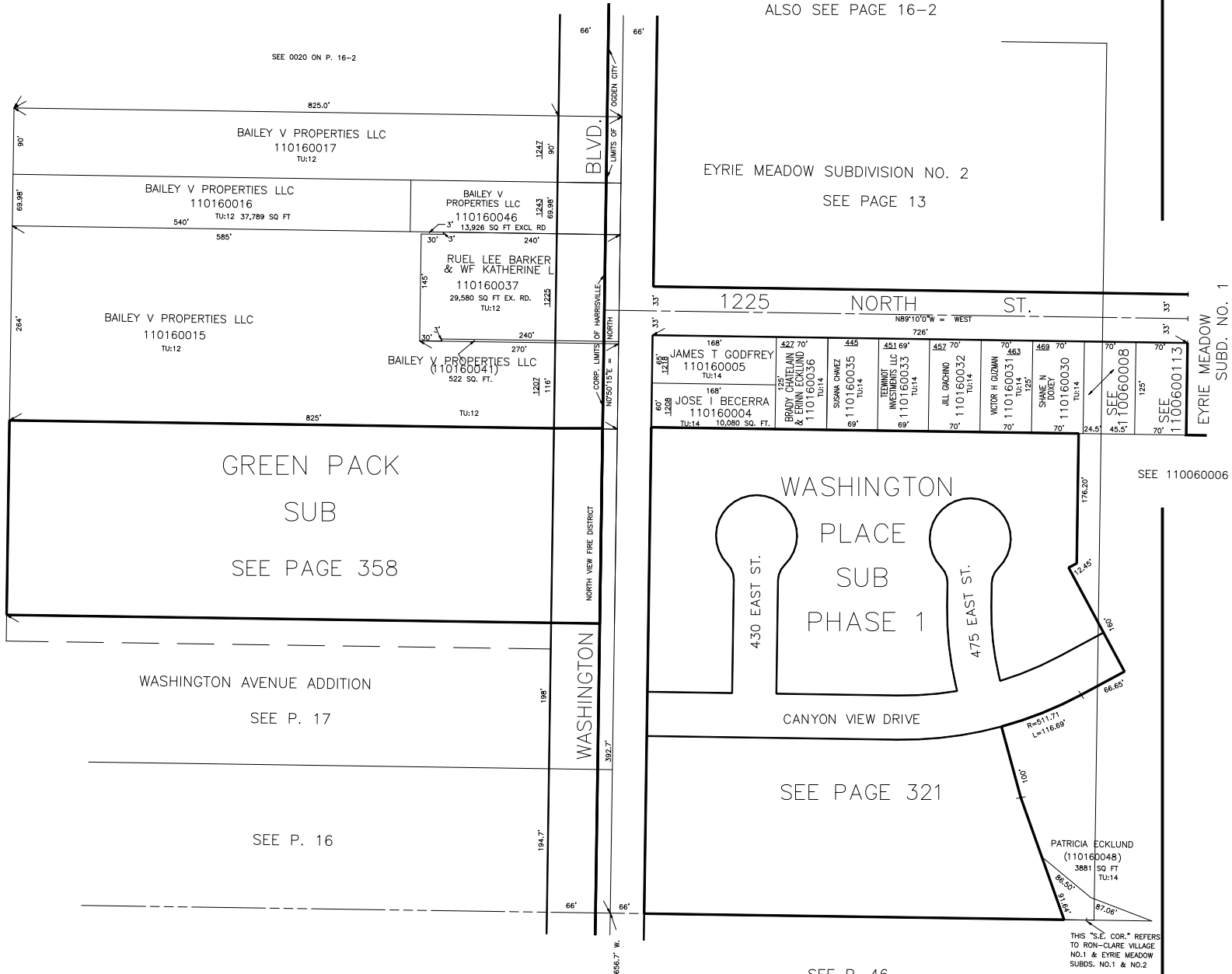
PART OF S.E. 1/4
SECTION 5, T.6N.,R.1W., S.L.B.&M.

IN THE TOWN OF HARRISVILLE & OGDEN CITY

TAXING UNIT: 12,14

SCALE 1" = 100'

PREFIX:11-016



ALSO SEE PAGE 16-2

EYRIE MEADOW SUBDIVISION NO. 2
SEE PAGE 13

1225 NORTH ST.

168' 127.5'	422 70' 168' 110160005 Tu:14	445 110160035 Tu:14	451 69' 110160033 Tu:14	457 70' 110160032 Tu:14	70' 110160031 Tu:14	489 70' 110160030 Tu:14	70' 110160008 Tu:14	70' 1100600113 Tu:14
60' 128'	168' 110160004 Tu:14	89' 110160036 Tu:14	69' 110160033 Tu:14	70' 110160032 Tu:14	70' 110160031 Tu:14	70' 110160030 Tu:14	45.5' 110060008 Tu:14	70' 1100600113 Tu:14

GREEN PACK
SUB
SEE PAGE 358

WASHINGTON
PLACE
SUB
PHASE 1

WASHINGTON AVENUE ADDITION
SEE P. 17

CANYON VIEW DRIVE
SEE PAGE 321

SEE P. 16

PATRICIA ECKLUND
(110160048)
3881 SQ FT
TU:14

SEE 110060006

EYRIE MEADOW
SUBD. NO. 1
SEE P. 7

SEE P. 46
RON-CLARE VILLAGE NO. 1

THIS "S.E. COR." REFERS
TO RON-CLARE VILLAGE
NO.1 & EYRIE MEADOW
SUBDS. NO.1 & NO.2